

Mock Jury presented by Zapp and the Saint Louis Art Fair 2025 Juror Scorecard

Application: 1 of 55

ID#: 2837258

Statement: Silver sheet is transformed to create dimension. Layering metals-soldering gold onto silver adds depth. Shaping natural materials with lapidary equipment allows me to preserve its unique beauty while fusing organic with industrial flair. Blurring masculine and feminine aesthetics.

Discipline: Three-Dimensional Work

Score:

5 4 3 2 1

Comments:



Save Score

Application: 2 of 55

ID#: 2838538

Statement: Creating wood artwork takes patience, an eye for detail a deep appreciation for the beauty of wood.

Discipline: Three-Dimensional Work

Score:

5 4 3 2 1

Comments:



Save Score

Application: 3 of 55

ID#: 2861979

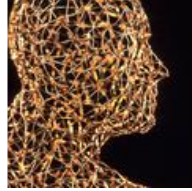
Statement: Wire mobiles and sculptures. Each piece begins as an original clay figure, these are reproduced in wax using molds. Wire is hand-woven stitch-by-stitch around these wax forms and the wax is melted away. Materials are: copper, bronze, silver and gold. LED lights are woven into the interior.

Discipline: Three-Dimensional Work

Score:

5 4 3 2 1

Comments:



Save Score

Application: 4 of 55

ID#: 2839856

Statement: I love leather and I hate trite design--so I fabricate functional shapes into sculptural leather accessories. Clearly expressed lines, accurate execution, and design innovation are my objectives. I use old fashioned hand tools and modern design to fabricate leather into colorful & unusual shapes.

Discipline: Three-Dimensional Work

Score:

5 4 3 2 1

Comments:



Save Score

Application: 5 of 55

ID#: 2837429

Statement: Handmade functional wheel-thrown pottery accompanied by extrud hand-woven clay baskets. I also do some slab-work, using dollies, wood rollers for textures. All items are bisque fired, then dipped into custom hand mixed glazes and fired in electric kilns to Cone 6. All work is completed in my studio.

Discipline: Three-Dimensional Work

Score:

5 4 3 2 1

Comments:



Save Score

Application: 6 of 55

ID#: 2841102

Statement: I make porcelain jewelry. Each piece is cut, sculpted, and painted by hand. I use layers of glazes to create illustrative surface designs. I finish with luster overglazes and mixed media details.

Discipline: Three-Dimensional Work

Score:

5 4 3 2 1

Comments:



Save Score

Application: 7 of 55

ID#: 2862054

Statement: As a Flameworker, I use heat to shape glass. The liquid nature of my medium dictates my process; shapes are built drop by drop in alternating opacities creating iridescent surfaces. Techniques include etching, pressing, sewing, use of dichroic & high silver glass for vibrant metallic textures.

Discipline: Three-Dimensional Work

Score: 5 4 3 2 1

Comments:



Save Score

Application: 8 of 55

ID#: 2837185

Statement: Wheel thrown stoneware, often altered, with hand carved textures, fired in a reduction atmosphere.

Discipline: Three-Dimensional Work

Score: 5 4 3 2 1

Comments:



Save Score

Application: 9 of 55

ID#: 2862774

Statement: I'll use a variety of objects to create a 3-D effect, including silkscreen, airbrush, acrylics, and found objects

Discipline: Three-Dimensional Work

Score: 5 4 3 2 1

Comments:



Save Score

Application: 10 of 55

ID#: 2862504

Statement: My work is devoted to exploring, with two hands, the unexpected possibilities of ordinary clay, simple tools, and heat. Functional objects, ceramic paintings, and poetic vessel forms emerge. Through the strength of its character plus a little tenacity, the clay arises into a seemingly other thing.

Discipline: Three-Dimensional Work

Score:

- 5 4 3 2 1

Comments:



Save Score

Application: 11 of 55

ID#: 2837249

Statement: hand fabrication using precious metals...cutting, forming, and connecting...all work by me alone.

Discipline: Three-Dimensional Work

Score:

- 5 4 3 2 1

Comments:



Save Score

Application: 12 of 55

ID#: 2837608

Statement: My jewelry is from vintage metals, it is minimal, brutalistic, unconventional, raw, and may show the scars of the metal's former life. Using a saw, hammer, files, and torch, the original material is no longer identifiable, and has been transformed into its own reality, wearable art.

Discipline: Three-Dimensional Work

Score:

- 5 4 3 2 1

Comments:



Save Score

Application: 13 of 55

ID#: 2837680

Statement: Quilting cotton is hand-cut, interfaced and quilted with foam, combined with natural fibers such as leather, cork, linen, or canvas, constructed, and finalized with the re-birthing, binding, or drop-in-lining method.

Discipline: Three-Dimensional Work

Score:

- 5
- 4
- 3
- 2
- 1

Comments:



Save Score

Application: 14 of 55

ID#: 2862701

Statement: Bold pattern, captivating texture, Argentium silver and high carat gold; this is the palette I use to create my work. My pieces evoke the ancient art of gold granulation but with a modern twist.

Discipline: Three-Dimensional Work

Score:

- 5
- 4
- 3
- 2
- 1

Comments:



Save Score

Application: 15 of 55

ID#: 2862921

Statement: I employ a wide variety of common materials, some found and some man-made, "organizing" them into sources of mystery, each with an underlying message as reflected in their titles.

Discipline: Three-Dimensional Work

Score:

- 5
- 4
- 3
- 2
- 1

Comments:



Save Score

Application: 16 of 55

ID#: 2862586

Statement: I create heirloom quality fine jewelry, by hand-sculpting wax and using a lost wax method to cast my pieces in recycled sterling silver and golds. I love using earthy gemstones and natural diamonds in my work. I employ advanced stone setting techniques and often add hand engraved details.

Discipline: Three-Dimensional Work

Score:

5 4 3 2 1

Comments:



Save Score

Application: 17 of 55

ID#: 2837749

Statement: I think of myself as an abstract expressionist painter that uses glass. My pieces are layered by using different particle size colors and fine metals to create truly, one of a kind pieces. The work is very thick; exploring optics of the glass, juxtaposing the organic shape with a cut/polished lip.

Discipline: Three-Dimensional Work

Score:

5 4 3 2 1

Comments:



Save Score

Application: 18 of 55

ID#: 2838829

Statement: Inspired by the endless possibilities that exist in nature, I design and fabricate settings in precious metals around unique gemstones into one-of-a-kind art jewelry. Found botanicals, butterflies, dragonflies and formed wax are lost wax cast by me, capturing all of nature's mesmerizing detail.

Discipline: Three-Dimensional Work

Score:

5 4 3 2 1

Comments:



Save Score

Application: 19 of 55

ID#: 2837196

Statement: Using a wax stylus, I layer melted beeswax and aniline dyes on real eggshells, building intricate designs that are revealed once the wax is melted away, resulting in beautiful batik eggs (pysanky).

Discipline: Three-Dimensional Work

Score: 5 4 3 2 1

Comments:



Save Score

Application: 20 of 55

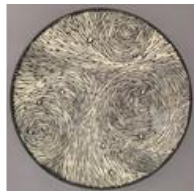
ID#: 2837134

Statement: My work is all made by hand, primarily using the potters wheel. Work is then covered with a black layer of liquid clay and carved through to reveal the white clay underneath. Additional color is sometimes added using the mishima technique.

Discipline: Three-Dimensional Work

Score: 5 4 3 2 1

Comments:



Save Score

Application: 21 of 55

ID#: 2839993

Statement: My Wall Dolls are wired and posable. They feature a variety of textures: faux fur, wool, faux leather, cotton and include a mix of patterns. Each one is handmade and one of a kind.

Discipline: Three-Dimensional Work

Score: 5 4 3 2 1

Comments:



Save Score

Application: 22 of 55

ID#: 2840801

Statement: I like to think my work is to art, what Jazz is to Music. Not always understood but the mood put forth sure looks and sounds good. My work is created from raw materials by me, from the initial design, to the glass, acrylic, wood, painting, & the metal fabrication. My wife helps w/ the metals.

Discipline: Three-Dimensional Work

Score: 5 4 3 2 1

Comments:



Save Score

Application: 23 of 55

ID#: 2871665

Statement: I create contemporary, colorful wearable art, made with natural fibers including wool, silk, linen and cotton. All fabric is created or manipulated by me, using techniques such as felting, sunprinting and shibori. The garments are one of a kind or limited edition and created in my home studio.

Discipline: Three-Dimensional Work

Score: 5 4 3 2 1

Comments:



Save Score

Application: 24 of 55

ID#: 2844398

Statement: I create 3D steel, aluminum, and stainless sculptures using various metal forming, cutting and welding techniques. Pieces are hand finished with abrasives to create texture beneath translucent powdercoat finishes.

Discipline: Three-Dimensional Work

Score: 5 4 3 2 1

Comments:



Save Score

Application: 25 of 55

ID#: 2837539

Statement: I create wood wall art that consists of turned, carved and burned wood mounted on a painted cradled wood panel.

Discipline: Three-Dimensional Work

Score: 5 4 3 2 1

Comments:



Save Score

Application: 26 of 55

ID#: 2865683

Statement: Hand stitching with 22k gold and or fine silver is an integral part of my textile-inspired work and design aesthetic. I use it to create textures and lines that define my work. I use forging and traditional jewelry-making techniques. Elements are joined by either soldering or fusing.

Discipline: Three-Dimensional Work

Score: 5 4 3 2 1

Comments:



Save Score

Application: 27 of 55

ID#: 2838616

Statement: I turn fallen, reclaimed and locally sourced wood into functional, whimsical and purposeful art. Using processes perfected over decades, I'm able to expose a beautiful hidden world which few have the opportunity to see.

Discipline: Three-Dimensional Work

Score: 5 4 3 2 1

Comments:



Save Score

Application: 28 of 55

ID#: 2862076

Statement: These one of a kind creations feature repurposed materials blended with steel. With over 30 years experience the artist uses MIG welding, plasma cutting and a myriad of finishing processes. The use of vintage objects adds a story to each piece which is an unmistakable mark of the artist's work.

Discipline: Three-Dimensional Work

Score: 5 4 3 2 1

Comments:



Save Score

Application: 29 of 55

ID#: 2837570

Statement: I create one-of-a-kind jewelry pieces by layering hand-applied thin resin and oil paint, seamlessly integrating pigments, reclaimed cigar box wood, and found objects. I then set these unique creations in intricate silver bezels, crafted from soldered silver strip and wire.

Discipline: Three-Dimensional Work

Score: 5 4 3 2 1

Comments:



Save Score

Application: 30 of 55

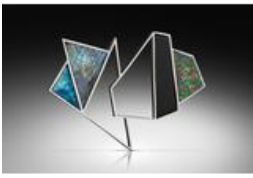
ID#: 2837139

Statement: We use traditional techniques to fabricate one-of-a-kind silver jewelry using fortunately found and wisely collected stones and materials. Our simple architectural designs calls attention to the materiality of our pieces and in-house lapidary work allows us to explore asymmetry, scale, and texture.

Discipline: Three-Dimensional Work

Score: 5 4 3 2 1

Comments:



Save Score

Application: 31 of 55

ID#: 2839100

Statement: Wheel-thrown, hand-built low-fire red earthenware finished with the majolica process: brushed ceramic stains & oxides over a raw white glaze. Electric-fired. Found or made objects may be added as the final step. Inspiration is from nature, Art Nouveau, and childhood fairytale book illustrations.

Discipline: Three-Dimensional Work

Score: 5 4 3 2 1

Comments:



Save Score

Application: 32 of 55

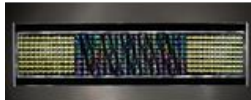
ID#: 2839150

Statement: I hand cut multiple pieces of dichroic glass and layer and multiple fuse them. I then slump it over custom molds. I then personally create a self-invented 3-dimensional frame to create wall hangings.

Discipline: Three-Dimensional Work

Score: 5 4 3 2 1

Comments:



Save Score

Application: 33 of 55

ID#: 2837355

Statement: The artists hand cut and assemble limited-edition artful leather bags using hand-selected cowhides and juxtaposed with contrasting leathers of various colors and textures. Each bag is one of a kind.

Discipline: Three-Dimensional Work

Score: 5 4 3 2 1

Comments:



Save Score

Application: 34 of 55

ID#: 2871698

Statement: I use traditional metalsmithing techniques to make reversible jewelry from silver and hand-tinted opaque resin. I choose a different color palette for each face of the piece (to make it reversible) before sanding it to a matte finish. My style references some shapes and colors of mid-century design.

Discipline: Three-Dimensional Work

Score: 5 4 3 2 1

Comments:



Save Score

Application: 35 of 55

ID#: 2837151

Statement: i have been an artist in ink and oil paint for most of my life. Most recently i adapt my images to a format of interactive animation machines. my machines are modified types of Zoetropes and Praxinoscopes, pictures rotating on wheels that create the appearance of motion, some with mirrors.

Discipline: Three-Dimensional Work

Score: 5 4 3 2 1

Comments:



Save Score

Application: 36 of 55

ID#: 2840798

Statement: Our work is created with of love of natural stone, but with a twist of man made color. Each one of a kind piece is hand crafted by us, from the initial design, to the stone & glass cutting, and all of the metal fabrication.

Discipline: Three-Dimensional Work

Score: 5 4 3 2 1

Comments:



Save Score

Application: 37 of 55

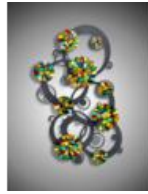
ID#: 2837250

Statement: Steel is hand fabricated using welders, hand tools and plasma cutter. Each steel piece is uniquely made by the artist. Kiln fired tiles made from clay and resin are fired, cut & inlayed into the steel. Each tile gets one of our 14 colors of glaze. Every piece is unique.

Discipline: Three-Dimensional Work

Score: 5 4 3 2 1

Comments:



Save Score

Application: 38 of 55

ID#: 2856116

Statement: We use various low and mid fire clay bodies to create our slab built happy monsters. Slab building gives us the ability to make each piece unique and creates our monster's whimsical personality.

Discipline: Three-Dimensional Work

Score: 5 4 3 2 1

Comments:



Save Score

Application: 39 of 55

ID#: 2844699

Statement: My works are welded using 90% upcycled and repurposed materials. These one of a kind pieces are inspired by everyday materials and are created by playing with and recombining found objects. I try to engage my audience by capturing moments of humor we all experience in everyday life.

Discipline: Three-Dimensional Work

Score: 5 4 3 2 1

Comments:



Save Score

Application: 40 of 55

ID#: 2850524

Statement: My work includes accurately contracted braille, sized and spaced for tactile readers, inviting touch and connection by and with the wearer. Expressive explorations in form and texture in sterling silver with gold detailing and ethically lab grown stones.

Discipline: Three-Dimensional Work

Score:

5 4 3 2 1

Comments:



Save Score

Application: 41 of 55

ID#: 2856982

Statement: I make wheel-thrown, functional ceramics, fired in an electric kiln, and decorated with my original designs, using printed iron oxide decals. My ceramic forms are a canvas to display my love of nature and animals. My pottery is modern, and I perform every step in my process by hand.

Discipline: Three-Dimensional Work

Score:

5 4 3 2 1

Comments:



Save Score

Application: 42 of 55

ID#: 2842496

Statement: New steel is hand fabricated using our welders and plasma cutter. Each piece of steel in our designs is handmade. Our tiles made from clay & our 14 glazes are kiln fired, cut & inlayed into the steel.

Discipline: Three-Dimensional Work

Score:

5 4 3 2 1

Comments:



Save Score

Application: 43 of 55

ID#: 2857632

Statement: I hand carve tiny pieces of wax and cast them in the lost wax casting process. They are then hand constructed into one of a kind pieces. They are made of 18kt, 22kt, and sterling silver and incorporate unusual and rare stones and diamonds. The pieces will have vitreous enamel incorporated as well.

Discipline: Three-Dimensional Work

Score: 5 4 3 2 1

Comments:



Save Score

Application: 44 of 55

ID#: 2837485

Statement: We design each piece based on the unique characteristics of the focal stone. We use advanced silversmithing techniques, including soldering and forging, to bring our designs to life. We incorporate accent pieces and varied textures to achieve symmetry, balance, and fluidity in each creation.

Discipline: Three-Dimensional Work

Score: 5 4 3 2 1

Comments:



Save Score

Application: 45 of 55

ID#: 2860686

Statement: Wheel-thrown porcelain ceramic work is inspired by textures and colors found through their outdoor adventures as an experienced forager and hiker. This is done through hand carving, layering, and glazing techniques, creating these realistic clay creations.

Discipline: Three-Dimensional Work

Score: 5 4 3 2 1

Comments:



Save Score

Application: 46 of 55

ID#: 2857641

Statement: I hand carve tiny pieces of wax and cast them in the lost wax casting process. They are then hand constructed into one of a kind pieces. They are made of 18kt, 22kt, and sterling silver and incorporate unusual and rare stones and diamonds. Often the pieces will have vitreous enamel in them.

Discipline: Three-Dimensional Work

Score: 5 4 3 2 1

Comments:



Save Score

Application: 47 of 55

ID#: 2837411

Statement: My approach to shaping blown and hot cast glass is highly focused on the interaction between surface and light. I fabricate steel tools to shape and texture the hot glass, and then I hand cut and polish the glass with diamond abrasives.

Discipline: Three-Dimensional Work

Score: 5 4 3 2 1

Comments:



Save Score

Application: 48 of 55

ID#: 2852682

Statement: Unique sculptural fiber art combines contemporary ideas with ancient felting techniques and sustainable practices. Natural fibers like wool, silk, and flax are manually agitated in soapy water to create dense forms, then enhanced with hand-painting to complete the vision.

Discipline: Three-Dimensional Work

Score: 5 4 3 2 1

Comments:



Save Score

Application: 49 of 55

ID#: 2852342

Statement: We design and construct custom ergonomic seating.
We use wood from trees from our local area
We are a father son team and we enjoy making things that people use everyday

Discipline: Three-Dimensional Work

Score: 5 4 3 2 1

Comments:



Save Score

Application: 50 of 55

ID#: 2838304

Statement: Narrative jewelry that is made by combining recycled & fabricated objects, horology & storytelling. Made by silversmithing, engraving & riveting silver, bronze, brass hand-fabricated & found objects.

Discipline: Three-Dimensional Work

Score: 5 4 3 2 1

Comments:



Save Score

Application: 51 of 55

ID#: 2856354

Statement: Wildlife photographs captured with a Canon 5D Mark IV and various lenses. I handcraft my frames from reclaimed or salvaged wood using pocket holes to join corners and a router to create display cases.

Discipline: Three-Dimensional Work

Score: 5 4 3 2 1

Comments:



Save Score

Application: 52 of 55

ID#: 2837117

Statement: consider myself a very traditional potter, working in thrown and hand-built pottery. I am currently using midrange clay and glazes creating all food and dishwasher safe functional pottery.

Discipline: Three-Dimensional Work

Score: 5 4 3 2 1

Comments:



Save Score

Application: 53 of 55

ID#: 2861991

Statement: I create detailed graphite pencil drawings on paper of nature and musical portraits. I then color some of the drawings digitally and then transfer them to hangable skate decks. I then build mixed media assemblage, sculptural frames from exotic wood and found objects to hang the boards within.

Discipline: Three-Dimensional Work

Score: 5 4 3 2 1

Comments:



Save Score

Application: 54 of 55

ID#: 2839387

Statement: Wheel-thrown functional forms with hand-sculpted, hand-painted wildlife forms. Each sculpture is previously researched for accurate representation for it's real-life counterparts.

Discipline: Three-Dimensional Work

Score: 5 4 3 2 1

Comments:



Save Score

Application: 55 of 55

ID#: 2862679

Statement: Our work uses many different techniques including hand-dyed, hand woven Ikat/Shibori, Computerized Jaquard Knitting and Silk Screens to create unique limited edition fabrics. All our designs and patterns are original and all work is done in our studio in our home.

Discipline: Three-Dimensional Work

Score:

5 4 3 2 1

Comments:



Save Score

Displaying Rows 1-55

Prev Page

Next Page

Back to Main Jury Menu

