



Logout Profile Main Jury Menu

.. Jury
!.. > Scorecard

Mock Jury presented by Zapp and the Saint Louis Art Fair 2024 Juror Scorecard

Application: 1 of 64




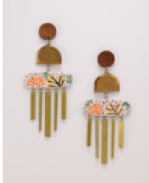

ID#: 2622161

Statement: I make porcelain and stoneware ceramic jewelry, hand cut from slabs of clay. Each piece is hand painted with a variety of underglazes, gloss glazes, and luster glazes to create unique surface patterns. I assemble my ceramic with brass, glass, fiber, and wood to create modern wearable works of art

Discipline: Three-Dimensional Work

Score: 5 4 3 2 1

Comments:

[Save Score](#)

Application: 2 of 64






ID#: 2622177

Statement: Simple geometric steel and aluminum sculpture and clocks affordable for most who appreciate my work!

Discipline: Three-Dimensional Work

Score: 5 4 3 2 1

Comments:

[Save Score](#)

Application: 3 of 64

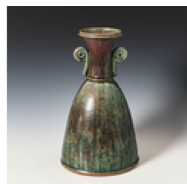
ID#: 2622307

Statement: Wheel thrown stoneware, sometimes altered, with hand carved textures, high fired in a reduction atmosphere.

Discipline: Three-Dimensional Work

Score: 5 4 3 2 1

Comments:



Save Score

Application: 4 of 64

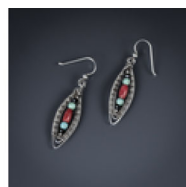
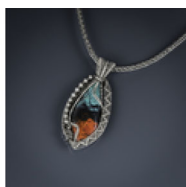
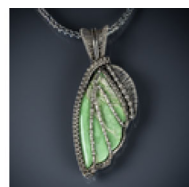
ID#: 2622310

Statement: Intricately detailed wire weaving. The patterns used for setting stones are to enhance the natural qualities of the stones and bring out their personality. A single weaving wire is used in bracelets for continuity and durability. Larger chains are hand woven. Cold connects used to finish designs.

Discipline: Three-Dimensional Work

Score: 5 4 3 2 1

Comments:



Save Score

Application: 5 of 64

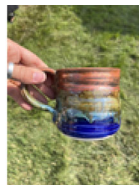
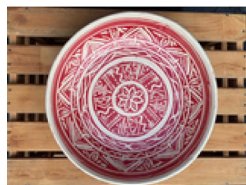
ID#: 2622532

Statement: My pieces are wheel thrown white stoneware. Many pieces are embellished with underglazes and sgraffito; cone 5 firing and hand made in limited small batch quantities in my home studio

Discipline: Three-Dimensional Work

Score: 5 4 3 2 1

Comments:



Save Score

Application: 6 of 64

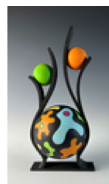
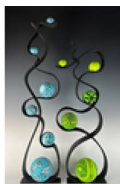
ID#: 2623088

Statement: I create abstract contemporary sculptures by painting wooden spheres in graphic patterns with watercolor and/or acrylic paint. These spheres are then suspended in ribbon like forms designed and sculpted with PLA.

Discipline: Three-Dimensional Work

Score: 5 4 3 2 1

Comments:



Save Score

Application: 7 of 64

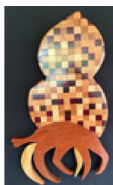
ID#: 2623132

Statement: I use domestic, exotic and semi exotic solid woods along with my original drawing designs to create nature inspired one of a kind pieces constructed using glue wood joinery techniques only with crystal clear lacquer finishes to highlight the natural color and grain patterns of the species

Discipline: Three-Dimensional Work

Score: 5 4 3 2 1

Comments:



Save Score

Application: 8 of 64

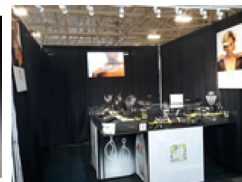
ID#: 2623548

Statement: Hand-fabricated, texture-rich jewelry, weaving together geometric and architectural forms, crafted in precious metals and detailed with cut and raw gemstones and pearls.

Discipline: Three-Dimensional Work

Score: 5 4 3 2 1

Comments:



Save Score

Application: 9 of 64

ID#: 2623588

Statement: Original silk garments from artist's handmade patterns; designed, cut, sewn, textured, hand-drawn, hand embroidered and/or freehand machine stitched. Many pieces are reversible front to back and/or inside to outside. Silk fabric with cotton, rayon, silk, and/or metallic threads.

Discipline: Three-Dimensional Work

Score: 5 4 3 2 1

Comments:



Save Score

Application: 10 of 64

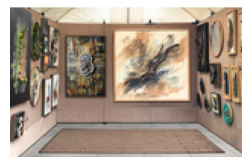
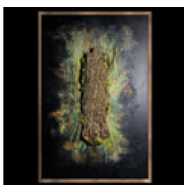
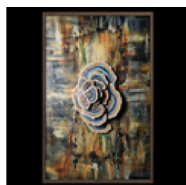
ID#: 2623686

Statement: I combine a diverse array of materials such as inks, acrylics, stains, resin, wood, metal, and found objects. I incorporate physical castings from living trees, rocks, or preserved bark, lending a unique and organic dimension to each piece.

Discipline: Three-Dimensional Work

Score: 5 4 3 2 1

Comments:



Save Score

Application: 11 of 64

ID#: 2624516

Statement: My creations blend the fluidity and calm of natural spaces, like water flowing over stone, with the clean lines of contemporary architecture. I craft this vision with an eye toward daily wearability, in fine silver and 24K gold using traditional metalsmithing techniques like sawing and forging.

Discipline: Three-Dimensional Work

Score: 5 4 3 2 1

Comments:



Save Score

Application: 12 of 64

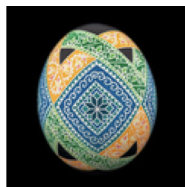
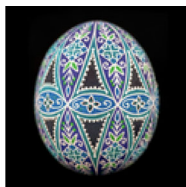
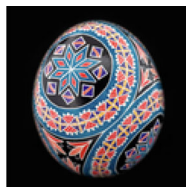
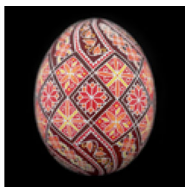
ID#: 2626383

Statement: All of my work is created with real eggshells in the pysanky folk art tradition using wax and dye. These Ukrainian batik eggs are then cut in half and framed. It is my honor to keep this folk art alive and thriving in fine art events.

Discipline: Three-Dimensional Work

Score: 5 4 3 2 1

Comments:



Save Score

Application: 13 of 64

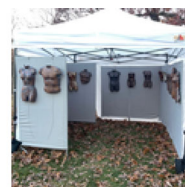
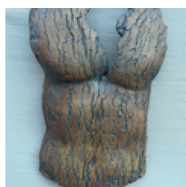
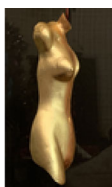
ID#: 2626849

Statement: I use stoneware clay and mostly iron oxides to highlight the texture of the figures. I sometimes utilize some molds I have created (not from life models), but those are often manipulated. The sculptures are high-fired or bisque fired and covered with gilding. Each sculpture is unique.

Discipline: Three-Dimensional Work

Score: 5 4 3 2 1

Comments:



Save Score

Application: 14 of 64

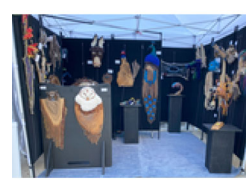
ID#: 2629165

Statement: I use needle, wet, nuno felting and weaving and integrate my felt with wood to create my interpretation of the images hidden within. My materials are all locally sourced or scavenged from Wisconsin.

Discipline: Three-Dimensional Work

Score: 5 4 3 2 1

Comments:



Save Score

Application: 15 of 64

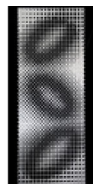
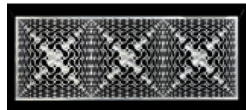
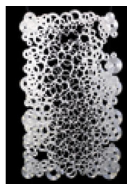
ID#: 2630366

Statement: Design, carve, machine, engrave aircraft aluminum. Worked from a single metal piece, no mistakes, edition of 1. My work uses reflection, form and negative space, and of course, proper design. Inspiration drawn from a lifetime studying natural form

Discipline: Three-Dimensional Work

Score: 5 4 3 2 1

Comments:



Save Score

Application: 16 of 64

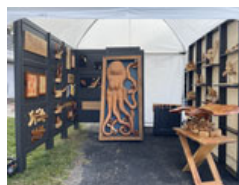
ID#: 2630586

Statement: Utilizes traditional hand carving tools, including chisels and knives, to sculpt rough sawn and fresh fallen hardwoods. Carving techniques are combinations of chip carving, relief carving and sculpture.

Discipline: Three-Dimensional Work

Score: 5 4 3 2 1

Comments:



Save Score

Application: 17 of 64

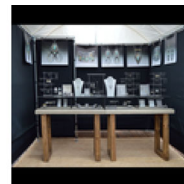
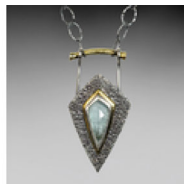
ID#: 2630876

Statement: Primarily limited/one-off designs using mixed metals and natural stones. Pieces typically oxidized and heavily textured manually, with fused silver and reticulation.

Discipline: Three-Dimensional Work

Score: 5 4 3 2 1

Comments:



Save Score

Application: 18 of 64

ID#: 2630973

Statement: As a goldsmith, I make each piece with design inspirations from the beauty of the outdoors. It maybe a stream or edge of a building. I strive for simplicity and contrast in the use materials, boldly using raw and fine together. But no matter the form or material, the jewelry is art with a story.

Discipline: Three-Dimensional Work

Score: 5 4 3 2 1

Comments:



Save Score

Application: 19 of 64

ID#: 2631111

Statement: I make whimsical yet functional ceramic pieces that are wheel thrown and then hand decorated. Clay is my calm space. I use a variety of techniques including Mishima, Sgraffito among many more.

Discipline: Three-Dimensional Work

Score: 5 4 3 2 1

Comments:



Save Score

Application: 20 of 64

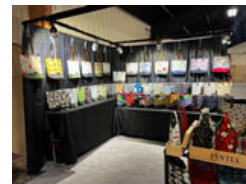
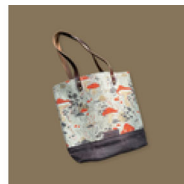
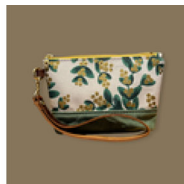
ID#: 2631565

Statement: Crafted with durable canvas, leather handles and brass hardware, my tote bags blend style and functionality. Meticulously stitched for resilience, they feature reinforced handles and precise detailing, ensuring a perfect balance of fashion and practicality.

Discipline: Three-Dimensional Work

Score: 5 4 3 2 1

Comments:



Save Score

Application: 21 of 64

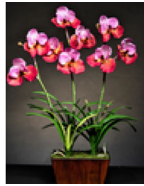
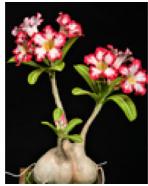
ID#: 2632131

Statement: Flowers were made by hand from special air-dry clay. Each was cut, rolled, sculpted and painted with vibrant oil colors in realistic details and put in flowerpots for long lasting decorations.

Discipline: Three-Dimensional Work

Score: 5 4 3 2 1

Comments:



Save Score

Application: 22 of 64

ID#: 2633004

Statement: Sara Patino Jewelry is a timelessly modern collection made in St. Louis, MO. It's handcrafted with recycled gold and sustainably sourced natural gems. Soldering, filing, hammering, stone setting is used. It's jewelry for women that make a difference; they want to look, feel and do good with jewelry.

Discipline: Three-Dimensional Work

Score: 5 4 3 2 1

Comments:



Save Score

Application: 23 of 64

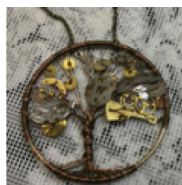
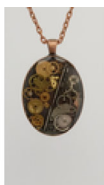
ID#: 2636498

Statement: I create one of a kind jewelry by repurposing broken pocket watches from 1860-1930's, wrist watches, vintage jewelry, old coins/buttons and findings. I use cold connections to attach pieces together.

Discipline: Three-Dimensional Work

Score: 5 4 3 2 1

Comments:



Save Score

Application: 24 of 64

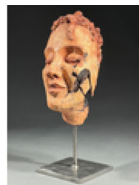
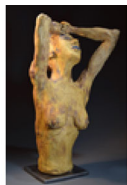
ID#: 2637125

Statement: I use stoneware clay, steel or combination of the two. My clay work is hand built, high fired and finished with oxide stains and glazes so the natural beauty of the clay and hand of the artist show. My steel work is all forged and welded by hand, polished and finished with clear enamel.

Discipline: Three-Dimensional Work

Score: 5 4 3 2 1

Comments:



Save Score

Application: 25 of 64

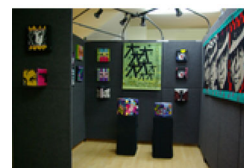
ID#: 2638678

Statement: I am exploring how two-dimensional handwoven tapestry become 3-dimensional objects. These 3D cubes are the result. They are a take-off of children's ABC blocks. There are six different side designs, woven flat and folded into a block form. Materials are cotton, silk, wool and metal wire.

Discipline: Three-Dimensional Work

Score: 5 4 3 2 1

Comments:



Save Score

Application: 26 of 64

ID#: 2639142

Statement: I make handmade, wheel-thrown ceramics fired in an electric kiln. I decorate my pottery with original iron oxide printed decals. My ceramic forms are a canvas to display my love of nature and animals. My pottery is functional and modern, and I perform every step in my process by hand.

Discipline: Three-Dimensional Work

Score: 5 4 3 2 1

Comments:



Save Score

Application: 27 of 64

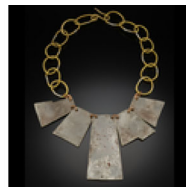
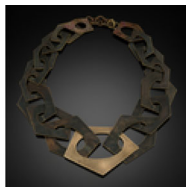
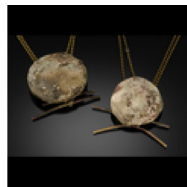
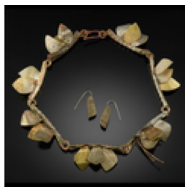
ID#: 2640542

Statement: I fabricate my jewelry from up cycled silver plate trays from thrift stores. I saw, file, sand, and hammer the metal and then use a torch to add a rich fire patina. Because the metal is brass with a thin layer of silver, it is unpredictable, and the results are always exciting.

Discipline: Three-Dimensional Work

Score: 5 4 3 2 1

Comments:



Save Score

Application: 28 of 64

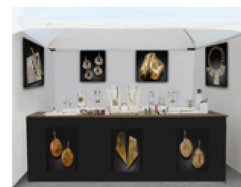
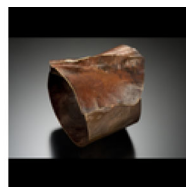
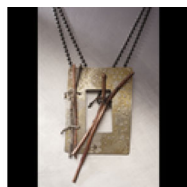
ID#: 2640543

Statement: My jewelry is from upcycled silver plate trays, it is minimal, brutalistic, unconventional, raw, and may show the scars of the metal's former life. Using a saw, hammer, files, and torch, the original material is no longer identifiable, and has been transformed into its own reality.

Discipline: Three-Dimensional Work

Score: 5 4 3 2 1

Comments:



Save Score

Application: 29 of 64

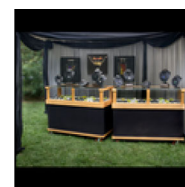
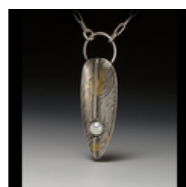
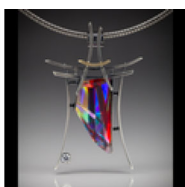
ID#: 2641121

Statement: Our work is created with of love of natural stone, but with a twist of man made color. Each one of a kind piece is hand crafted by us, from the initial design, to the stone & glass cutting, and all of the metal fabrication.

Discipline: Three-Dimensional Work

Score: 5 4 3 2 1

Comments:



Save Score

Application: 30 of 64

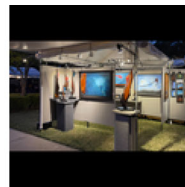
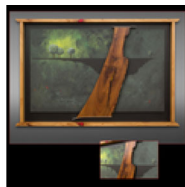
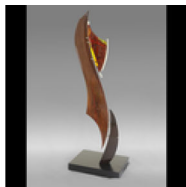
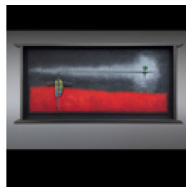
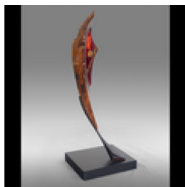
ID#: 2641128

Statement: My sculptural work is an evolution of the jewelry Wendy & I have created since 2005. The goal? To create something truly unique for the home. They are created from raw materials by me, from the initial design, to the glass, acrylic, wood, painting, & the metal fabrication. Wendy helps w/ the metal.

Discipline: Three-Dimensional Work

Score: 5 4 3 2 1

Comments:



Save Score

Application: 31 of 64

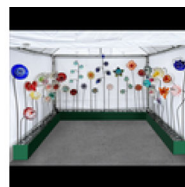
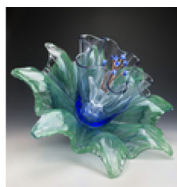
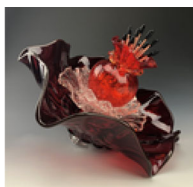
ID#: 2641672

Statement: Multiple skill sets are united in harmony to create these glass garden sculptures. Lamp work, soldering and welding combined with handblown and antique glass to create your forever flower. 3-7' tall.

Discipline: Three-Dimensional Work

Score: 5 4 3 2 1

Comments:



Save Score

Application: 32 of 64

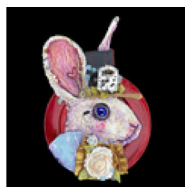
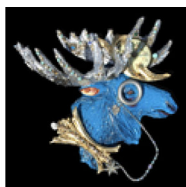
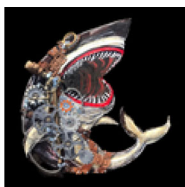
ID#: 2642464

Statement: Sculptural creatures on salvaged bases made with palette knives and frosting tips with acrylics and found objects

Discipline: Three-Dimensional Work

Score: 5 4 3 2 1

Comments:



Save Score

Application: 33 of 64

ID#: 2643860

Statement: Functional and sculptural earthenware objects are hand built using slab, coil, carving and pinching techniques. Sgraffito, brushwork, incised patterns and designs embellish the surface using black underglaze. All are finished with clear glaze.

Discipline: Three-Dimensional Work

Score: 5 4 3 2 1

Comments:



Save Score

Application: 34 of 64

ID#: 2645102

Statement: My work begins with simple geometric shapes – creating wheel-thrown stoneware with clean lines and angles. My work gives reference to Danish modern, with a hint of American retro. The work is influenced by both the beauty of our earth and the importance of the past.

Discipline: Three-Dimensional Work

Score: 5 4 3 2 1

Comments:



Save Score

Application: 35 of 64

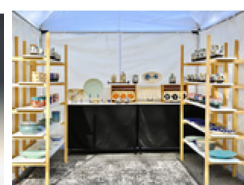
ID#: 2645275

Statement: I create functional pottery that is either wheel thrown or slab built using stoneware or porcelain materials. Using my training in Chinese brush painting, each piece is decorated with hand painted botanical illustrations and/or sculptured birds using underglazes and water etching techniques.

Discipline: Three-Dimensional Work

Score: 5 4 3 2 1

Comments:



Save Score

Application: 36 of 64

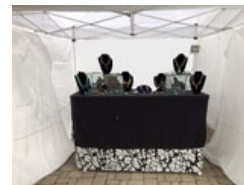
ID#: 2645826

Statement: Peyote stitched seed bead tubes and shag, embellished with hand fabricated sterling components and setting, accompanied by gemstones.

Discipline: Three-Dimensional Work

Score: 5 4 3 2 1

Comments:



Save Score

Application: 37 of 64

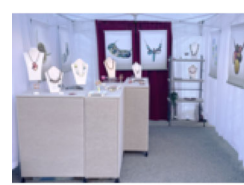
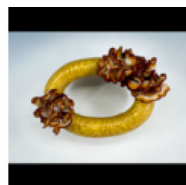
ID#: 2645979

Statement: Polymer clay is a chameleon material, lightweight and tactile. It's tremendous versatility make it natural for jewelry. I mold, carve, sculpt, screen, sand, drill, and polish everything to create my unique style. Clasps and findings are artist-made; all work is designed and created by my two hands.

Discipline: Three-Dimensional Work

Score: 5 4 3 2 1

Comments:



Save Score

Application: 38 of 64

ID#: 2646155

Statement: I create lathe-turned fine art and craft, and my native style tends toward organic, serene art forms that celebrate nature, primitive culture, and wood personality as part of the composition. My work incorporates texture, color, fire, bone, stone and metal inlay, and complimentary wood types.

Discipline: Three-Dimensional Work

Score: 5 4 3 2 1

Comments:



Save Score

Application: 39 of 64

ID#: 2646197

Statement: Creating intricate beadwork through off-loom weaving. Small collections and unique pieces feature fine glass, metal, and gemstone seed beads on waxed nylon thread. Metal smithing techniques enhance the art with precious metal components.

Discipline: Three-Dimensional Work

Score: 5 4 3 2 1

Comments:



Save Score

Application: 40 of 64

ID#: 2646257

Statement: I repurpose vintage bakelite using woodworking methods: sawing, drilling, sanding, gluing. Silver and gold pieces are made from sheet and wire, using traditional metalsmithing: sawing, soldering, hammering, and stone setting. Some pieces include inlays made of bakelite or heat-cured resin and opal.

Discipline: Three-Dimensional Work

Score: 5 4 3 2 1

Comments:



Save Score

Application: 41 of 64

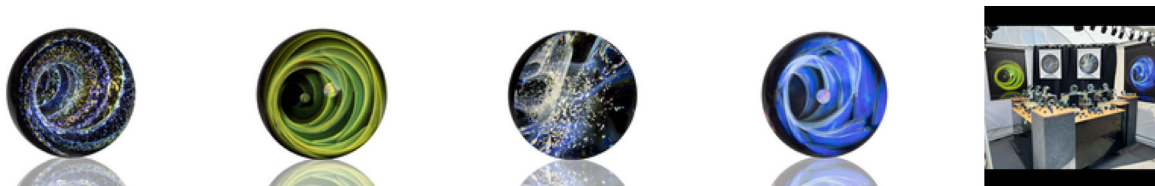
ID#: 2646474

Statement: Flameworked, borosilicate glass orbs up to 6" in diameter. This form of glassblowing allows for more detail than traditional techniques. The illusion on the inside appears to go beyond the constraints of the sphere while the opposite side contains 2-D patterns unique to the year of its creation.

Discipline: Three-Dimensional Work

Score: 5 4 3 2 1

Comments:



Save Score

Application: 42 of 64

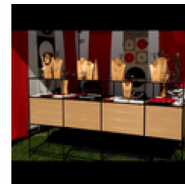
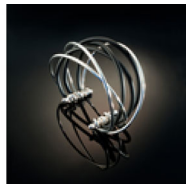
ID#: 2647430

Statement: hand-fabricated sterling silver jewelry that is cut, formed, forged, soldered, fused, folded, woven, and oxidized, sometimes accenting sterling designs with other metals, rubber, or stainless steel.

Discipline: Three-Dimensional Work

Score: 5 4 3 2 1

Comments:



Save Score

Application: 43 of 64

ID#: 2647729

Statement: I create functional pottery that is created on the wheel, altered by hand, and fired with wood. Using wood as the fuel source gives each piece a unique surface with an earthy palette.

Discipline: Three-Dimensional Work

Score: 5 4 3 2 1

Comments:



Save Score

Application: 44 of 64

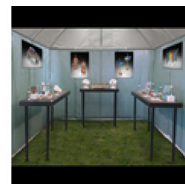
ID#: 2647747

Statement: I salvage the bodies of vintage cars and trucks in search of and in remembrance of the glory days of road trips & adventure. I rescue the steel in its original paint pallets and now weathered patinas with silver construct a new wearable journey. Cold construction creates a joyful modern aesthetic .

Discipline: Three-Dimensional Work

Score: 5 4 3 2 1

Comments:



Save Score

Application: 45 of 64

ID#: 2647847

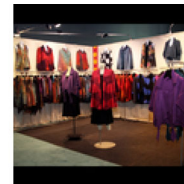
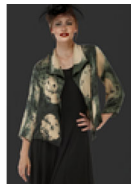
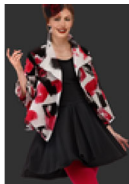
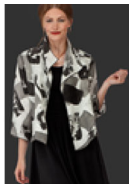
Statement: I dye & hand weave silk, print & shibori linen & silk screen fabrics to create unique limited edition textiles. I design, cut & sew garments for women in all sizes. All items in the images are part of my collection. I have exhibited in art fairs for over 40 years & pride myself on great service.

Discipline: Three-Dimensional Work

Score:

- 5
- 4
- 3
- 2
- 1

Comments:



Save Score

Application: 46 of 64

ID#: 2647906

Statement:

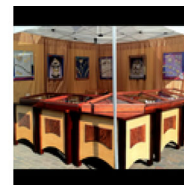
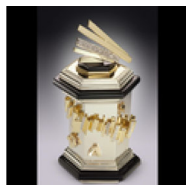
The jewelry elements consist of 14K and 22K gold, diamonds, Boulder Opals, pearls, semi -precious and exotic gems. Art boxes feature hand-carved onyx, lapis lazuli ,and other carved stone as architectural elements . Techniques include casting, construction, & fabrication.

Discipline: Three-Dimensional Work

Score:

- 5
- 4
- 3
- 2
- 1

Comments:



Save Score

Application: 47 of 64

ID#: 2647948

Statement: I use mostly mid-range stoneware clay fired in an electric kiln. I've been experimenting with atmospheric firing and am excited to add a small selection of wood and/or soda fired work into my portfolio. My large sculptural vessels are built using a modified coil method.

Discipline: Three-Dimensional Work

Score:

- 5
- 4
- 3
- 2
- 1

Comments:



Save Score

Application: 48 of 64

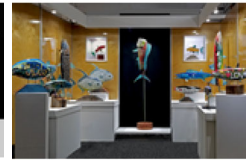
ID#: 2648168

Statement: Clay resin or wood bodies with fused glass, copper wire and sheet, and acrylic attachments. On refined wood bases with stainless steel.

Discipline: Three-Dimensional Work

Score: 5 4 3 2 1

Comments:



Save Score

Application: 49 of 64

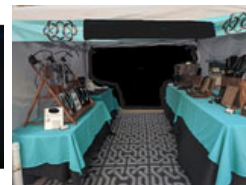
ID#: 2648728

Statement: We provide authentic, high quality, one-of-a-kind, timeless, sterling silver jewelry, with and/or without semi-precious gemstones. All pieces are hand sawed, formed, soldered, and polished by father and daughter.

Discipline: Three-Dimensional Work

Score: 5 4 3 2 1

Comments:



Save Score

Application: 50 of 64

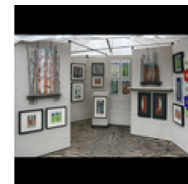
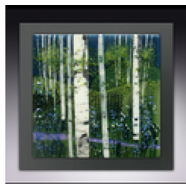
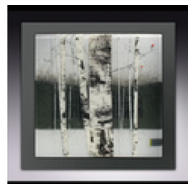
ID#: 2649114

Statement: Kiln fired glass creating an organic image w/depth of color &visual depth by layering opaque &transparent glass in each composition.Each art piece has ten or more layers of glass w/40+ hours of high temperature kiln firings.Each piece has quiet beauty that draws one in & calms one from outer chaos.

Discipline: Three-Dimensional Work

Score: 5 4 3 2 1

Comments:



Save Score

Application: 51 of 64

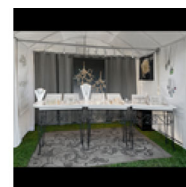
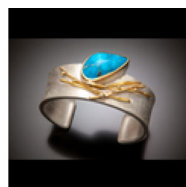
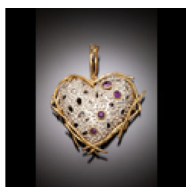
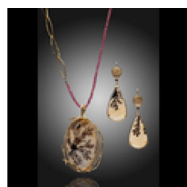
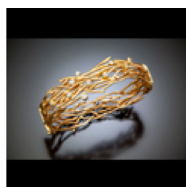
ID#: 2649188

Statement: I hand carve my pieces out of wax and cast them in the lost wax casting process. They are then hand constructed with various metals and stones. Mimicking the texture of nature abstractly is the main focus of the pieces. My fascination with ancient and antique jewelry finds it's way into them also.

Discipline: Three-Dimensional Work

Score: 5 4 3 2 1

Comments:



Save Score

Application: 52 of 64

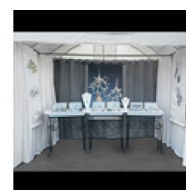
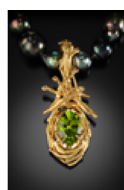
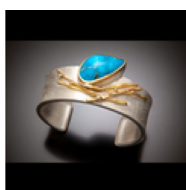
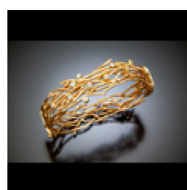
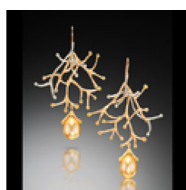
ID#: 2649194

Statement: I hand carve my pieces out of wax and cast them in the lost wax casting process. They are then hand constructed with various metals and stones. Mimicking the texture of nature abstractly is the main focus of the pieces. My fascination with ancient and antique jewelry finds it's way into them also.

Discipline: Three-Dimensional Work

Score: 5 4 3 2 1

Comments:



Save Score

Application: 53 of 64

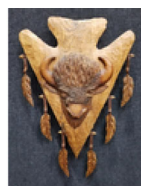
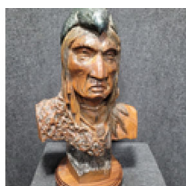
ID#: 2649688

Statement: My carvings are all hand carved with traditional chisels. I use Butternut wood for my more serious pieces eagles, busts, and commission work. I use Cottonwood bark for my whimsical Fairy houses and Santas. I generally use acrylic or oil paints or stains for the finish with polyurethane.

Discipline: Three-Dimensional Work

Score: 5 4 3 2 1

Comments:



Save Score

Application: 54 of 64

ID#: 2650643

Statement: My creations blend the fluidity and calm of natural spaces, like water flowing over stone, with the clean lines of contemporary architecture. I craft this vision with an eye toward daily wearability, in fine silver and 24K gold using traditional metalsmithing techniques like sawing and forging.

Discipline: Three-Dimensional Work

Score: 5 4 3 2 1

Comments:



Save Score

Application: 55 of 64

ID#: 2650685

Statement: I create wheel-thrown stoneware pottery. My pottery focuses on function and highlights the process of making. I use repetition and pattern in surface finishes. My work is functional because I enjoy having and creating unique and beautiful objects to be used in everyday life.

Discipline: Three-Dimensional Work

Score: 5 4 3 2 1

Comments:



Save Score

Application: 56 of 64

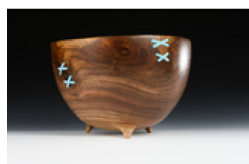
ID#: 2650742

Statement: I make wooden bowls using the once turned technique. I turn the wood while it is still wet (green) to its final size and shape. I then put aside to dry, while drying it moves and distorts due to internal tensions. once dry I embellish and and then finish.

Discipline: Three-Dimensional Work

Score: 5 4 3 2 1

Comments:



Save Score

Application: 57 of 64

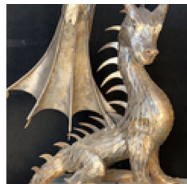
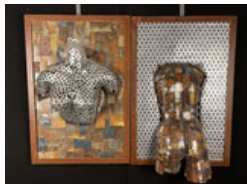
ID#: 2651270

Statement: All of my works are metal, I use found objects and up-cycled steel. All cutting and forming are done by hand. Finishes are mostly natural patinas, colors are achieved using a torch and heat treating. I do on occasion use antiquing solutions and paint.

Discipline: Three-Dimensional Work

Score: 5 4 3 2 1

Comments:



Save Score

Application: 58 of 64

ID#: 2651326

Statement: Wheel thrown, altered, reassembled ceramic work. The surface is layered with underglazes, then masked with vinyl patterns. It is then sanded to reveal the patterns and the strata of color around them.

Discipline: Three-Dimensional Work

Score: 5 4 3 2 1

Comments:



Save Score

Application: 59 of 64

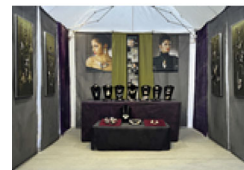
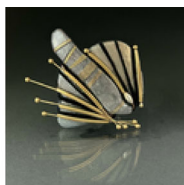
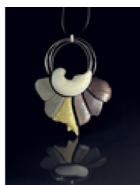
ID#: 2652066

Statement: I am obsessed with turning trash into treasure. Finding beauty in objects often overlooked by others makes me happy; it could be a broken shell, tiny pebble or piece of driftwood. My inspiration comes from the wealth of forms, patterns and textures created by Mother Nature.

Discipline: Three-Dimensional Work

Score: 5 4 3 2 1

Comments:



Save Score

Application: 60 of 64

ID#: 2652086

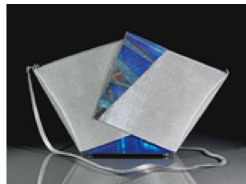
Statement: We use stainless steel mesh, beautiful industrial material mostly hidden in filtration systems, to create sculptural art objects that are functional handbags, accessories and personal adornments. We developed methods to add colors and textures that allow to uniquely decorate each of our creations.

Discipline: Three-Dimensional Work

Score:

- 5
- 4
- 3
- 2
- 1

Comments:



Save Score

Application: 61 of 64

ID#: 2652160

Statement: Textiles inspire my jewelry, and I use stitching to define my designs. "I gravitate towards texture, form, and intersecting lines. I experienced the freedom art could bring from a very young age when my grandmother taught me to sew and knit. Textiles inspired me: the texture of weaves, the movement

Discipline: Three-Dimensional Work

Score:

- 5
- 4
- 3
- 2
- 1

Comments:



Save Score

Application: 62 of 64

ID#: 2652161

Statement: I create figurative ceramic sculptures of people, plants, and animals. After kiln firings are complete, the works are integrated with mixed media often including fibers, glass, and precious metals.

Discipline: Three-Dimensional Work

Score:

- 5
- 4
- 3
- 2
- 1

Comments:



Save Score

Application: 63 of 64

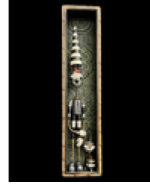
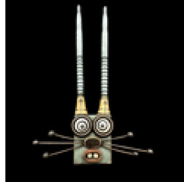
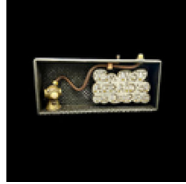
ID#: 2652613

Statement: Old wood, metal, tin, paint, textiles, paper, epoxy & other materials are used with techniques of hand carving, painting, welding, assemblage, pyrography and metalsmithing. I try to bring imagination to life in a contemporary style while preserving little pieces of history and historical techniques.

Discipline: Three-Dimensional Work

Score: 5 4 3 2 1

Comments:



[Save Score](#)

Application: 64 of 64

ID#: 2652685

Statement: In my artistic exploration, I specialize in crafting unique jewelry that weaves together a diverse array of glass beads in terms of types, sizes, and textures. Employing various techniques such as weaving and embroidery, I transform these tiny treasures into distinctive, wearable pieces of art.

Discipline: Three-Dimensional Work

Score: 5 4 3 2 1

Comments:



[Save Score](#)

Displaying Rows 1-64

[Prev Page](#) [Next Page](#)

[Back to Main Jury Menu](#)